



ANIMAL HEALTH MONITORING

RAT PANELS

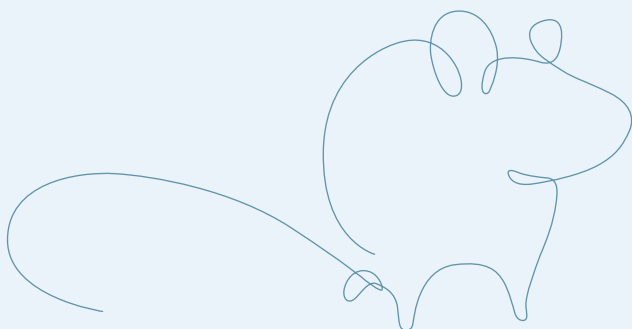
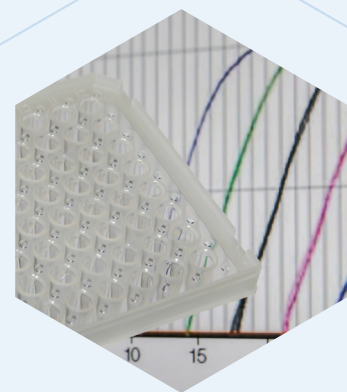
FERA OFFER A MICROBIOLOGICAL TESTING SERVICE FOR RATS IN ACCORDANCE WITH FELASA RECOMMENDATIONS. TALK TO US TO DEVISE YOUR OWN BESPOKE PANEL, WITH NO HIDDEN COSTS.



In accordance with FELASA recommendations.

We are committed to listening to our customers to develop and improve our rodent screening service. Our rat panels include *Rodentibacter ratti* formerly *Pasteurella pneumotropica* Taxon B, Taxon 22.

- // Utilises latest advances in diagnostics; Taqman® Real-Time PCR, Maldi-ToF and Volumetric Absorbive Microsampling (VAMs)
- // Fully automated high throughput extraction and analysis
- // Bespoke panels without extra costs
- // *Rodentibacter ratti* Real-Time PCR available
- // Urgent analysis – turnaround 24 hours
- // Tests can be applied to 'live' sampling and post-mortem sampling
- // In-house validated tests consistently identify pathogens in laboratory animals
- // Complementary consultancy set-up and training service by a specialist microbiologist



ORGANISMS	SPECIMIN TYPE	FERA QUARTERLY PANEL	FERA QUARTERLY PANEL + OPPORTUNISTS	FERA ANNUAL PANEL	FERA ANNUAL PANEL + OPPORTUNISTS	FERA RAT IMMUNO-COMPROMISED	METHOD
-----------	---------------	----------------------	-------------------------------------	-------------------	----------------------------------	-----------------------------	--------

BACTERIA & FUNGI

<i>B-Haemolytic Streptococcus Lancefield Group A</i>	WA/OS/E	o	o	o	o	o	PCR/Cult
<i>B-Haemolytic Streptococcus Lancefield Group B</i>	WA/F/E	o	o	o	o	o	PCR/Cult
<i>B-Haemolytic Streptococcus Lancefield Group C</i>	WA/F/E	o	o	o	o	o	PCR/Cult
<i>B-Haemolytic Streptococcus Lancefield Group G</i>	WA/F/E	o	o	o	o	o	PCR/Cult
<i>Bordetella bronchiseptica</i>	WA/OS/E		o		o	o	PCR/Cult
<i>Campylobacter species</i>	WA/F/E		o		o	o	PCR/Cult
<i>Clostridium piliforme</i>	WA/F/B/E	o	o	o	o	o	PCR/MFIA
<i>Corynebacterium bovis</i>	WA/PS/E		o		o	o	PCR/Cult
<i>Corynebacterium kutscheri</i>	WA/F/E		o		o	o	PCR/Cult
<i>Filobacterium rodentium</i>	WA/OS/B			o	o	o	PCR/MFIA
<i>Helicobacter species</i>	WA/F/E	o	o	o	o	o	PCR/Cult
<i>Helicobacter bilis</i>	WA/F/E	o	o	o	o	o	PCR/Cult
<i>Helicobacter ganmani</i>	WA/F/E	o	o	o	o	o	PCR/Cult
<i>Helicobacter hepaticus</i>	WA/F/E	o	o	o	o	o	PCR/Cult
<i>Helicobacter mastomyrinus</i>	WA/F/E	o	o	o	o	o	PCR/Cult
<i>Helicobacter rodentium</i>	WA/F/E	o	o	o	o	o	PCR/Cult
<i>Helicobacter typhlonius</i>	WA/F/E	o	o	o	o	o	PCR/Cult
<i>Klebsiella oxytoca</i>	WA/F/E		o		o	o	PCR/Cult
<i>Klebsiella pneumoniae</i>	WA/OS/E		o		o	o	PCR/Cult
<i>Mannheimia haemolytica</i>	WA/OS/E				o	o	PCR/Cult
<i>Mycoplasma pulmonis</i>	WA/OS/B/E	o	o	o	o	o	PCR/MFIA
<i>Pasteurella multocida</i>	WA/OS/E				o	o	PCR/Cult
<i>Pneumocystis species</i>	WA/OS/B/E			o	o	o	PCR/MFIA
<i>Proteus mirabilis</i>	WA/F/E		o		o	o	PCR/Cult
<i>Pseudomonas aeruginosa</i>	WA/F/E		o		o	o	PCR/Cult
<i>Rodentibacter heylii</i>	WA/OS/E	o	o	o	o	o	PCR/Cult
<i>Rodentibacter pneumotropicus</i>	WA/OS/E	o	o	o	o	o	PCR/Cult
<i>Rodentibacter ratti</i>	WA/OS/E	o	o	o	o	o	PCR/Cult
<i>Salmonella species</i>	WA/F/E			o	o	o	PCR/Cult
<i>Staphylococcus aureus</i>	WA/F/E		o		o	o	PCR/Cult
<i>Streptobacillus moniliformis</i>	WA/F/E			o	o	o	PCR/Cult
<i>Streptococcus pneumoniae</i>	WA/OS/E	o	o	o	o	o	PCR/Cult

PARASITES

<i>Aspicularis tetraptera</i>	WA/F/E	o	o	o	o	o	PCR/FC
<i>Chilomastix</i>	WA/F/E	o	o	o	o	o	PCR/FC
<i>Chilomastix species</i>	WA/F/E	o	o	o	o	o	PCR/MZN
<i>Eimeria species</i>	WA/F/E			o	o	o	PCR/FC
<i>Encephalitozoon cuniculi</i>	WA/F/B			o	o	o	PCR/MFIA
<i>Entamoeba muris</i>	WA/F/E	o	o	o	o	o	PCR/FC
<i>Giardia species</i>	WA/F/E	o	o	o	o	o	PCR/MIC
<i>Myobia musculi</i>	WA/PS/E	o	o	o	o	o	PCR/MIC
<i>Myocoptes musculinus</i>	WA/PS/E	o	o	o	o	o	PCR/MIC
<i>Ornithonyssus bacoti</i>	WA/PS/E				o	o	PCR/MIC
<i>Radfordia species</i>	WA/PS/E	o	o	o	o	o	PCR/FC
<i>Spironucleus muris</i>	WA/F/E	o	o	o	o	o	PCR/FC
<i>Syphacia muris</i>	WA/F/E	o	o	o	o	o	PCR/FC
<i>Syphacia obvelata</i>	WA/F/E	o	o	o	o	o	PCR/FC
<i>Tritrichomonas species</i>	WA/F/E	o	o	o	o	o	PCR/FC

VIRUSES

<i>Seoul Rat Hantavirus</i>	WA/F/E			o	o	o	RT-PCR/MFIA
<i>Rat Rotavirus IDIR</i>					o	o	MFIA
<i>Kilham Rat Virus</i>	WA/F/B/E	o	o	o	o	o	PCR/MFIA
<i>Lymphocytic Choriomeningitis Virus</i>	WA/F/B/F				o	o	RT-PCR/MFIA
<i>Mouse Adenovirus</i>	WA/F/E			o	o	o	PCR/MFIA
<i>Parainfluenzae Virus -3</i>	WA/B			o	o		MFIA
<i>Pneumonia Virus of Mice</i>	WA/OS/E	o	o	o	o	o	RT-PCR/MFIA
<i>Rat Coronavirus /Sialacrodentis virus</i>	WA/OS/E	o	o	o	o	o	RT-PCR/MFIA
<i>Rat Minute Virus</i>	WA/F/E	o	o	o	o	o	PCR/MFIA
<i>Rat Parvovirus</i>	WA/F/E	o	o	o	o	o	PCR/MFIA
<i>Rat Theilovirus</i>	WA/F/E	o	o	o	o	o	RT-PCR/MFIA
<i>Reovirus 3</i>	WA/F/E			o	o	o	RT-PCR/MFIA
<i>Sendai Virus</i>	WA/OS/E			o	o	o	RT-PCR/MFIA
<i>Toolan's H1 virus</i>	WA/F/E	o	o	o	o	o	PCR/MFIA

WA = WHOLE ANIMAL
F = FAECES
B = BLOOD VAMS
MITRA /SERUM

OS = ORAL SWAB
PS = PELT SWAB
E = ENVIORNMENTAL
EAD

PCR = POLYMERASE CHAIN REACTION
RT-PCR = REVERSE TRANSCRIPTASE REAL TIME PCR
MFIA = MULTIPLEX FLUOROMETRIC IMMUNOASSAY
MIC = MICROSCOPY

FC = FAECAL CONCENTRATION
MZN = MODIFIED ZIEHL-NEELSEN
Cult = CULTURE